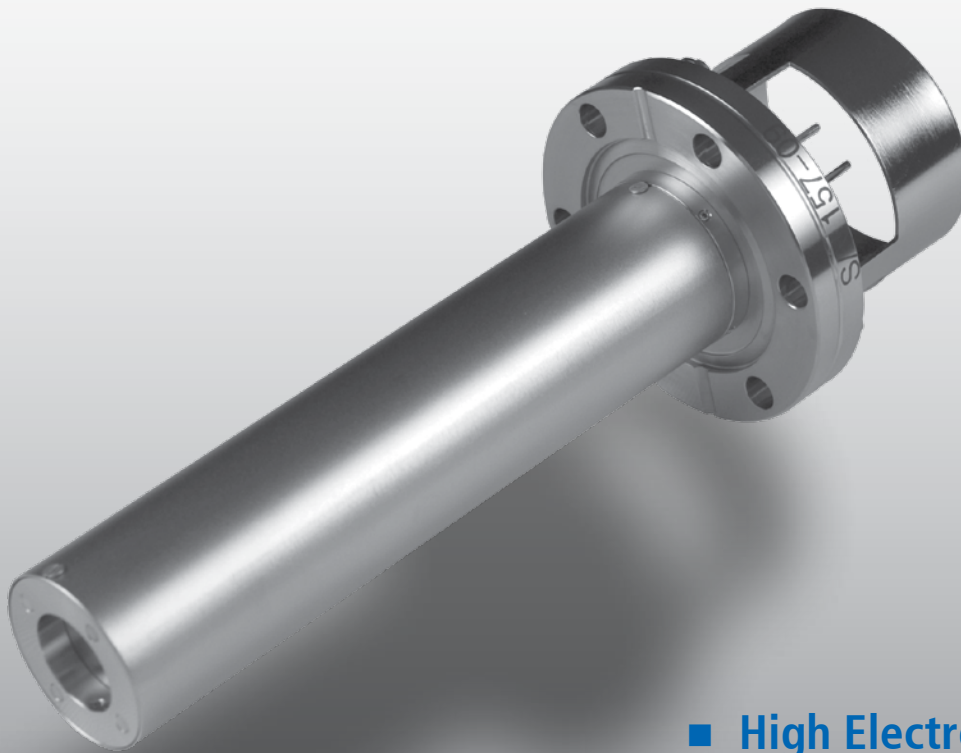


COMPONENTS FOR SURFACE ANALYSIS

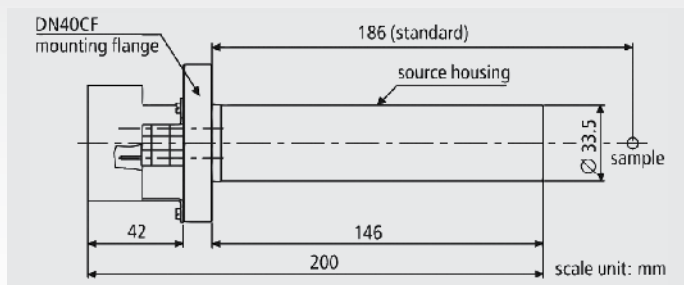
Flood Gun FG 15/40



- High Electron Beam Current
- Selectable Energy Ranges
0 - 10 eV and 0 - 500 eV
- Stabilized Emission

Flood Gun FG 15/40

- Energy range 0 - 500 eV
- Mounting flange DN40CF
- Insertion depth 146 mm
- Beam diameter 15 - 25 mm at 40 mm working distance
- Optional customized insertion depth
- Bakeable to 250 °C

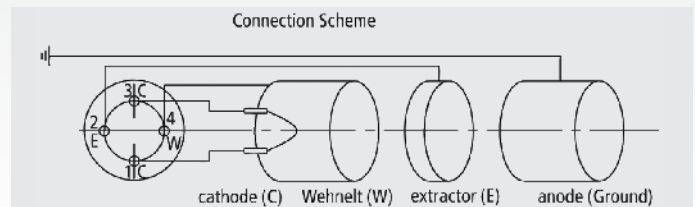


Beam Current Measured on Grounded Samples

E [eV]	0.1	1	5	10	100	500
I [μ A]	0.8	5	12	65	500	690

The FG 15/40 is a compact, easy to handle, reliable flood gun for charge neutralization of positively charged insulators or semiconductors.

The Flood Gun FG 15/40 allows operation in the energy ranges of 0 - 10 eV and 0 - 500 eV for charge compensation in typical XPS/AES and SIMS experiments, respectively.



Power Supply FG 500

- Selectable electron energy ranges 0-10 eV and 0-500 eV
- Stabilized emission: regulation accuracy better than 2% for 0-10 eV range
- Front panel control and display of filament, emission current and energy
- 5 m connecting cable
- 19" (W) x 89 mm (H)
- Shipping weight 6 kg
- 230/115 V, 60 VA, 50/60 Hz



Remote Control for Power Supply FG 500

- Remote control via computer interfaces (RS 232, CAN-Bus, or Ethernet via CAN-Bus to Ethernet adapter)
- Remote control of filament, emission current and energy

SPECS GmbH
Surface Analysis and Computer Technology
Voltastrasse 5
13355 Berlin
Germany

Tel.: +49 30 467 824 - 0
Fax: +49 30 464 2083
email: support@specs.com
web: www.specs.com



ISO 9001 Certificate

Your Local Representative: